

PAVEMENT MARKING NOTES

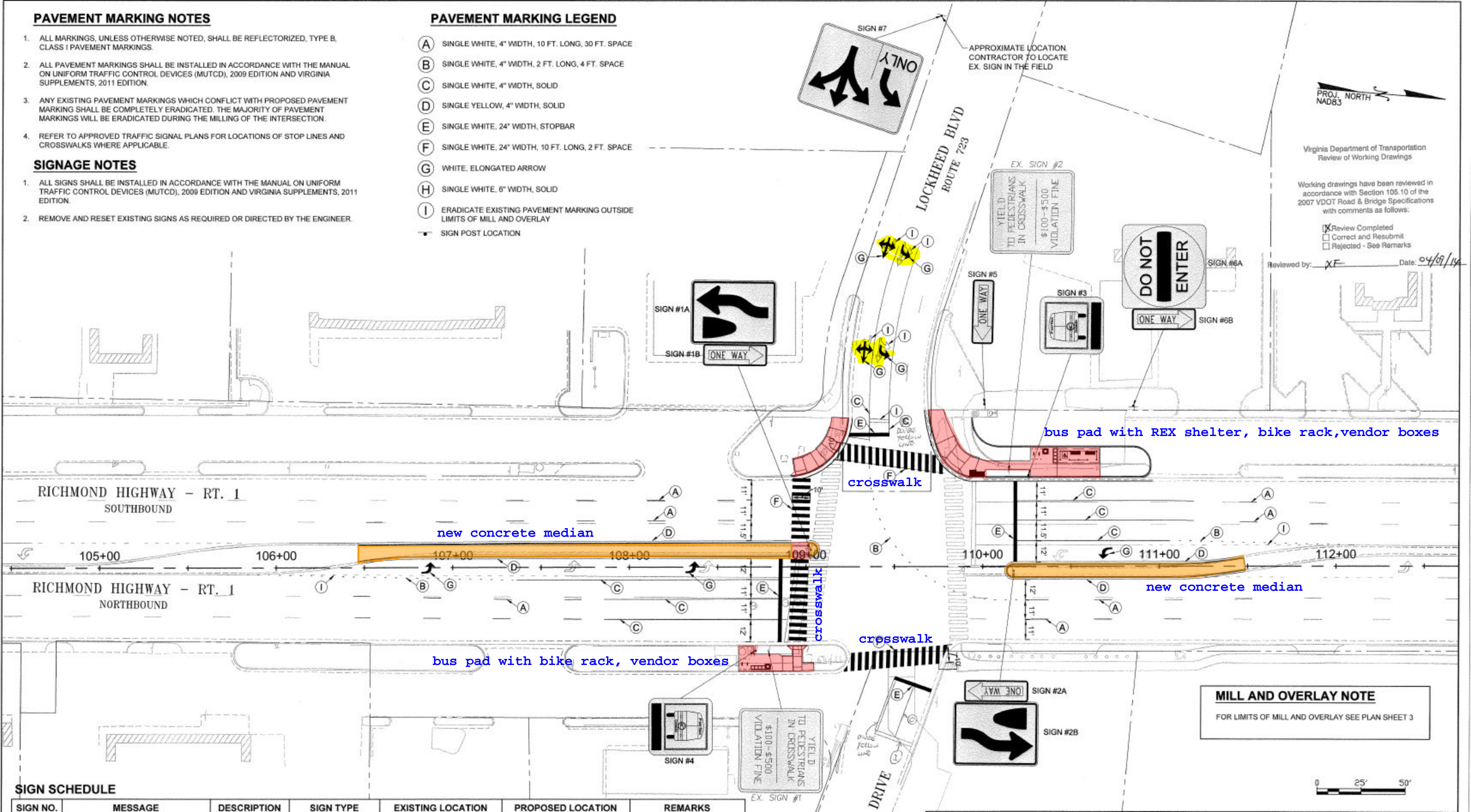
1. ALL MARKINGS, UNLESS OTHERWISE NOTED, SHALL BE REFLECTORIZED, TYPE B, CLASS I PAVEMENT MARKINGS.
2. ALL PAVEMENT MARKINGS SHALL BE INSTALLED IN ACCORDANCE WITH THE MANUAL ON UNIFORM TRAFFIC CONTROL DEVICES (MUTCD), 2009 EDITION AND VIRGINIA SUPPLEMENTS, 2011 EDITION.
3. ANY EXISTING PAVEMENT MARKINGS WHICH CONFLICT WITH PROPOSED PAVEMENT MARKING SHALL BE COMPLETELY ERADICATED. THE MAJORITY OF PAVEMENT MARKINGS WILL BE ERADICATED DURING THE MILLING OF THE INTERSECTION.
4. REFER TO APPROVED TRAFFIC SIGNAL PLANS FOR LOCATIONS OF STOP LINES AND CROSSWALKS WHERE APPLICABLE.

SIGNAGE NOTES

1. ALL SIGNS SHALL BE INSTALLED IN ACCORDANCE WITH THE MANUAL ON UNIFORM TRAFFIC CONTROL DEVICES (MUTCD), 2009 EDITION AND VIRGINIA SUPPLEMENTS, 2011 EDITION.
2. REMOVE AND RESET EXISTING SIGNS AS REQUIRED OR DIRECTED BY THE ENGINEER.

PAVEMENT MARKING LEGEND

- (A) SINGLE WHITE, 4" WIDTH, 10 FT. LONG, 30 FT. SPACE
- (B) SINGLE WHITE, 4" WIDTH, 2 FT. LONG, 4 FT. SPACE
- (C) SINGLE WHITE, 4" WIDTH, SOLID
- (D) SINGLE YELLOW, 4" WIDTH, SOLID
- (E) SINGLE WHITE, 24" WIDTH, STOPBAR
- (F) SINGLE WHITE, 24" WIDTH, 10 FT. LONG, 2 FT. SPACE
- (G) WHITE, ELONGATED ARROW
- (H) SINGLE WHITE, 6" WIDTH, SOLID
- (I) ERADICATE EXISTING PAVEMENT MARKING OUTSIDE LIMITS OF MILL AND OVERLAY
- SIGN POST LOCATION



Virginia Department of Transportation
Review of Working Drawings

Working drawings have been reviewed in accordance with Section 105.10 of the 2007 VDOT Road & Bridge Specifications with comments as follows:

- Review Completed
- Correct and Resubmit
- Rejected - See Remarks

Reviewed by: XF Date: 04/09/14

MILL AND OVERLAY NOTE
FOR LIMITS OF MILL AND OVERLAY SEE PLAN SHEET 3



SIGN SCHEDULE

SIGN NO.	MESSAGE	DESCRIPTION	SIGN TYPE	EXISTING LOCATION	PROPOSED LOCATION	REMARKS
SIGN #1A	Left turn arrow	Left turn arrow	Rectangular	At intersection	At intersection	
SIGN #1B	ONE WAY	ONE WAY	Rectangular	At intersection	At intersection	
SIGN #2A	ONE WAY	ONE WAY	Rectangular	At intersection	At intersection	
SIGN #2B	Left turn arrow	Left turn arrow	Rectangular	At intersection	At intersection	
SIGN #3	Signal	Signal	Rectangular	At intersection	At intersection	
SIGN #4	Signal	Signal	Rectangular	At intersection	At intersection	
SIGN #5	ONE WAY	ONE WAY	Rectangular	At intersection	At intersection	
SIGN #6A	DO NOT ENTER	DO NOT ENTER	Rectangular	At intersection	At intersection	
SIGN #6B	ONE WAY	ONE WAY	Rectangular	At intersection	At intersection	
EX. SIGN #1	YIELD TO PEDESTRIANS IN CROSSWALK	YIELD TO PEDESTRIANS IN CROSSWALK	Rectangular	At intersection	At intersection	
EX. SIGN #2	YIELD TO PEDESTRIANS IN CROSSWALK	YIELD TO PEDESTRIANS IN CROSSWALK	Rectangular	At intersection	At intersection	